



PROPERTY
SERVICES
LIMITED



2 Brunswick Road , Coventry, CV1 3EX

£4,500 Per Calendar Month



****STUDENTS - 6 BEDROOM HOUSE AVAILABLE SEPTEMBER 2026****

Welcome to Earlsdon's Classic Chic Lux-Suites
Taking Co-Living to the Next Level!

Situated in the heart of Earlsdon, these luxurious co-living suites offer the perfect blend of comfort and convenience — all within walking distance to Coventry City Centre and the train station.

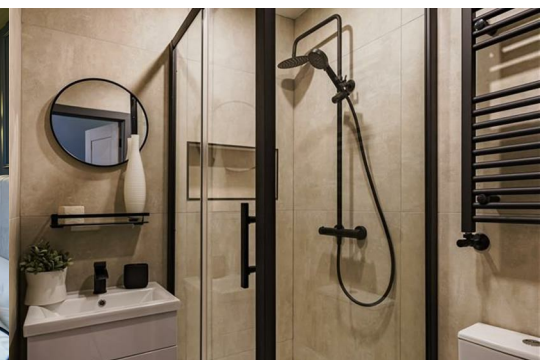
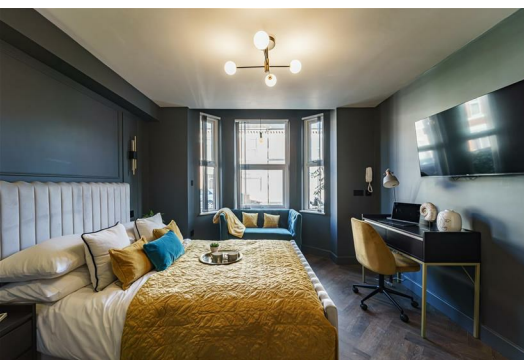
£750.00 PCM PER ROOM | Zero Deposit Scheme Available
Available 1st September 2026

The Lux-Suite:

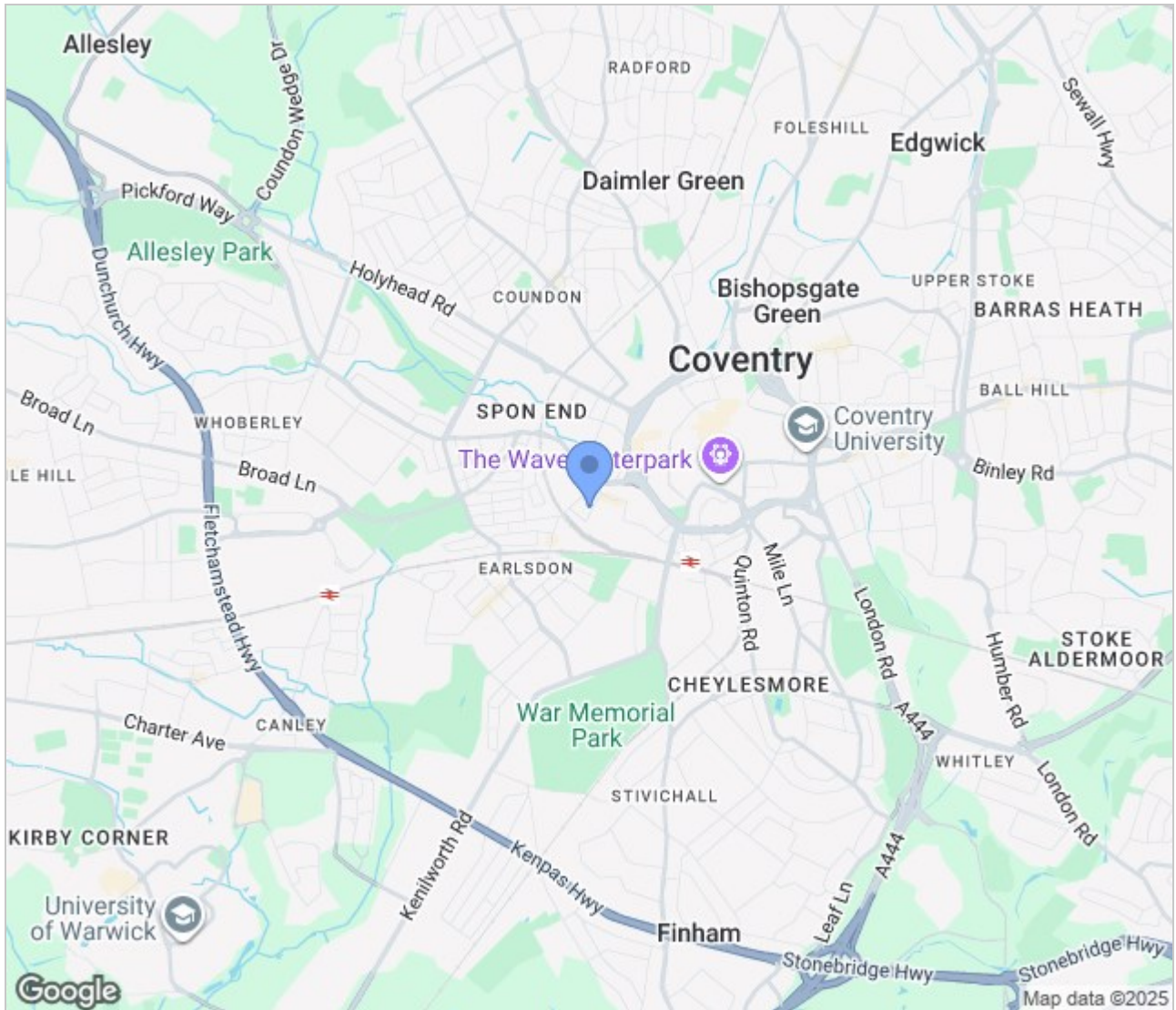
Designed to maximise both style and space, each suite features a smart open-plan layout with a subtle divide between the living and sleeping areas.

*Stylishly Furnished Bed Area

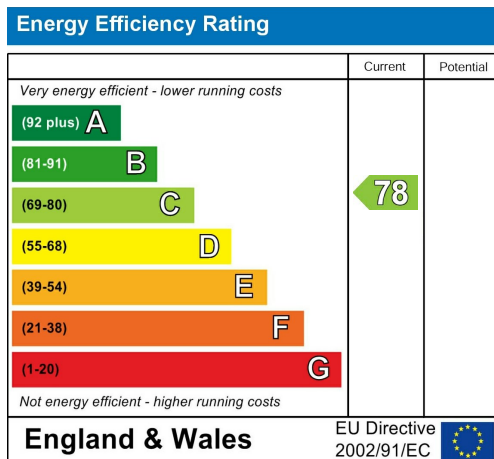
*Desk Area – Perfect for Working or Studying



Area Map



Energy Efficiency Graph



These particulars, whilst believed to be accurate are set out as a general outline only for guidance and do not constitute any part of an offer or contract. Intending purchasers should not rely on them as statements of representation of fact, but must satisfy themselves by inspection or otherwise as to their accuracy. No person in this firm's employment has the authority to make or give any representation or warranty in respect of the property.

GLB Property Services Ltd
9 Hay Lane
Coventry, CV1 5RJ

T. 02476 433416

info@glbpropertyservices.com
www.glbpropertyservices.com

